

LED Test Report

Product Mark

Product Type : NE4X8LT-300-120821-5

Manufacturer :

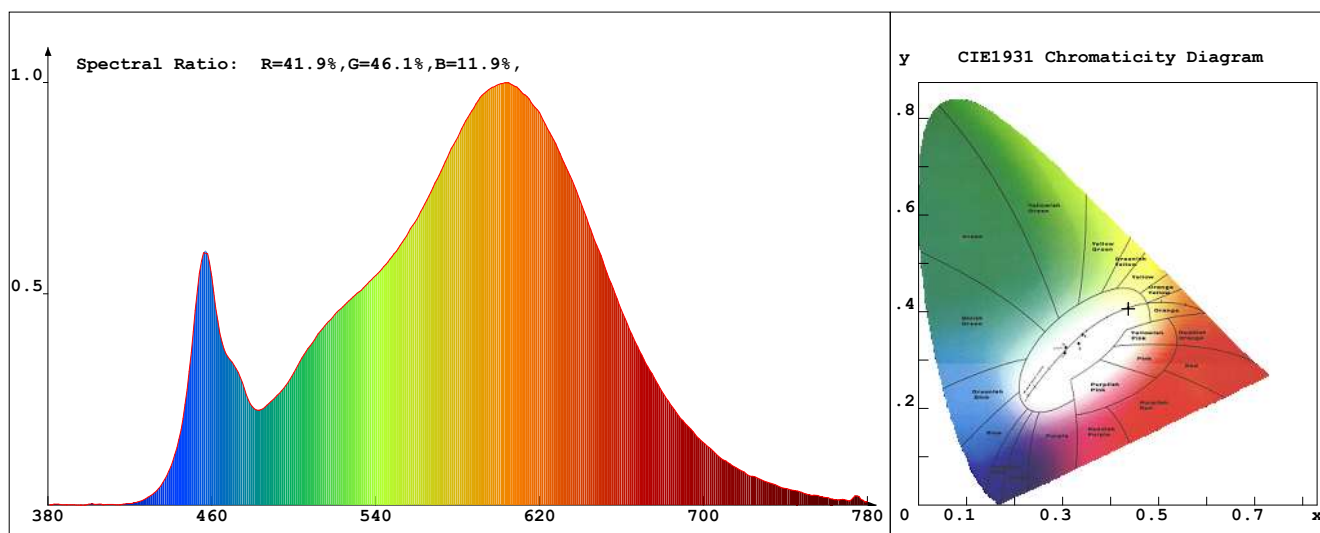
Temperature : 'C

Humidity : %

Operator :

Test Date : 31-01-23 00:45:27

Remark:



Chroma Parameters

Chro.Coord.: $x=0.4367$ $y=0.4066$ $u=0.2493$ $v=0.3482$ $duv=0.0011$

CCT: 3025K Dominant Wave.: 582.4nm Purity: 53.1% Centre Wave: 592.5nm

Flux RGB Ratio: R=21.8%, G=76.3%, B=1.9% Peak Wave: 602.8nm Half Width: 126.0nm

Rendering Index: Ra= 82.1 CRI= 79.2

R1 =81 R2 =92 R3 =95 R4 =79 R5 =81 R6 =91 R7 =81 R8 =57

R9 =5 R10=82 R11=78 R12=68 R13=84 R14=98 R15=73

PPF: 3.341 μ mol/s (400-700nm)

PRF: 0.7mW (400-700nm)

PAR: 0.6mW (400-700nm)

Photo Parameters

Flux: 247.70lm Effi.: 28.9lm/W Radiant: 712.0mW Iv: 0.0mcd

Scotopic Flux: 339.4Plm Effi.: 0.0Plm/W S/P: 1.4

Efficiency: 0.00

Effi Level: A++ (EU 874-2012) Photon Flux: 3458.510 μ mol/s (380-780nm)

Ele. Parameters

Voltage: U=12.06V

Current: I=0.7120A

Power: P=8.601W

Power Factor: PF=1.000

Instrument state

Instrument: Lisun

Integral Time: 566.116ms

VPeak: 13912

VDark: 1459

Scan Range: 380-780nm

Product ID: 201508924

IES TM-30-2015 Test Report

Product Mark

Product Type : NE4X8LT-300-120821-5

Temperature : 'C

Operator :

Remark :

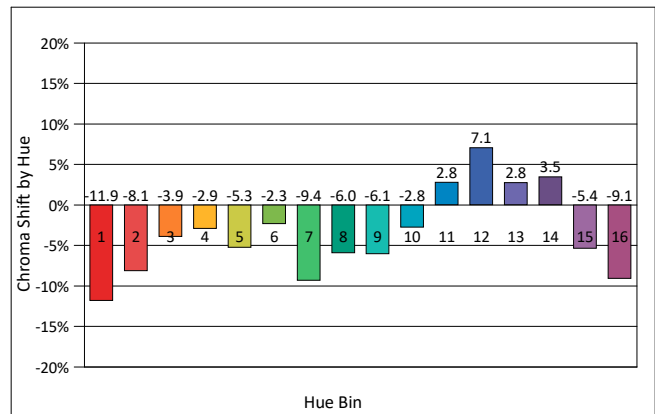
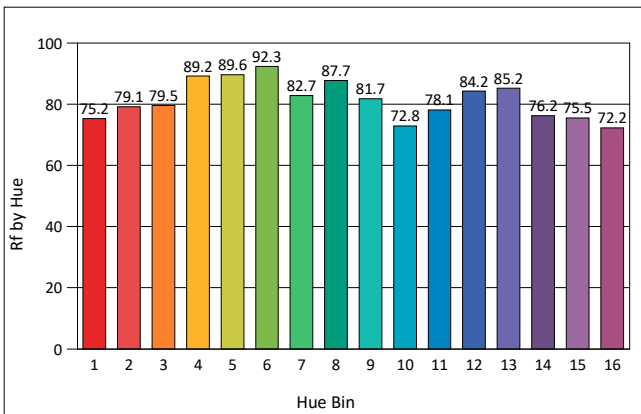
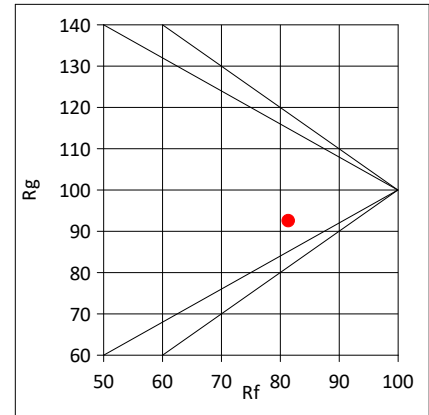
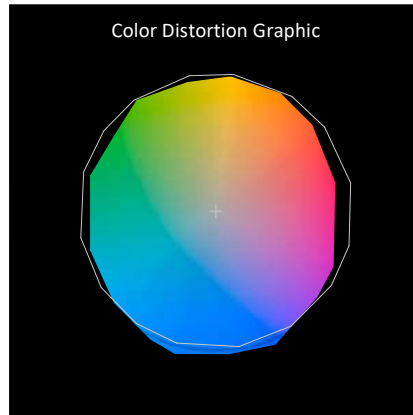
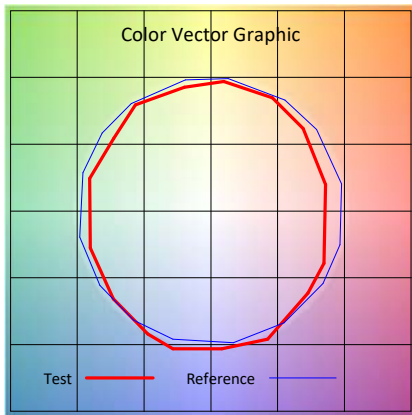
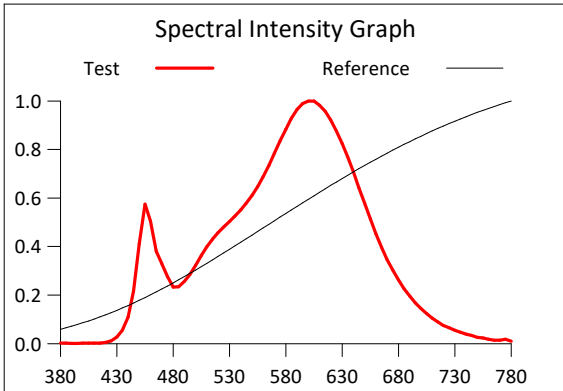
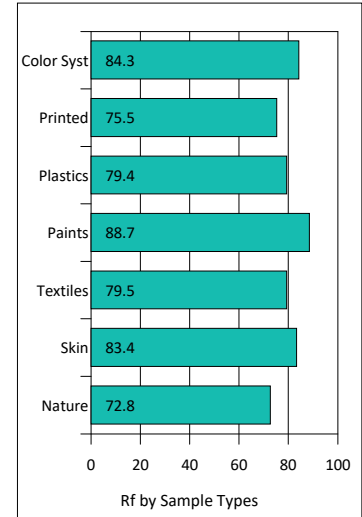
Manufacturer :

Humidity : %

Test Date : 31-01-23 00:45:27

Rf: 81.4 CCT(K): 3025 u': 0.2493
 Rg: 92.5 LER: 333.0 Duv: 0.0011 v': 0.3482

Hue Bin	Graphic Shifts (%)		
	Rf	Chroma	Hue
1	75.2	-11.9%	1.7%
2	79.1	-8.1%	6.3%
3	79.5	-3.9%	8.7%
4	89.2	-2.9%	2.8%
5	89.6	-5.3%	1.7%
6	92.3	-2.3%	-2.1%
7	82.7	-9.4%	-1.5%
8	87.7	-6.0%	3.0%
9	81.7	-6.1%	9.6%
10	72.8	-2.8%	14.0%
11	78.1	2.8%	14.5%
12	84.2	7.1%	1.3%
13	85.2	2.8%	-9.4%
14	76.2	3.5%	-17.1%
15	75.5	-5.4%	-12.3%
16	72.2	-9.1%	-16.1%



IES TM-30-2015 Test Report

Product Mark

Product Type : NE4X8LT-300-120821-5

Manufacturer :

Temperature : 'C

Humidity : %

Operator :

Test Date : 31-01-23 00:45:27

Remark :

