

LED Test Report

Product Mark

Product Type : F52-400-A0822 21.6W

Manufacturer :

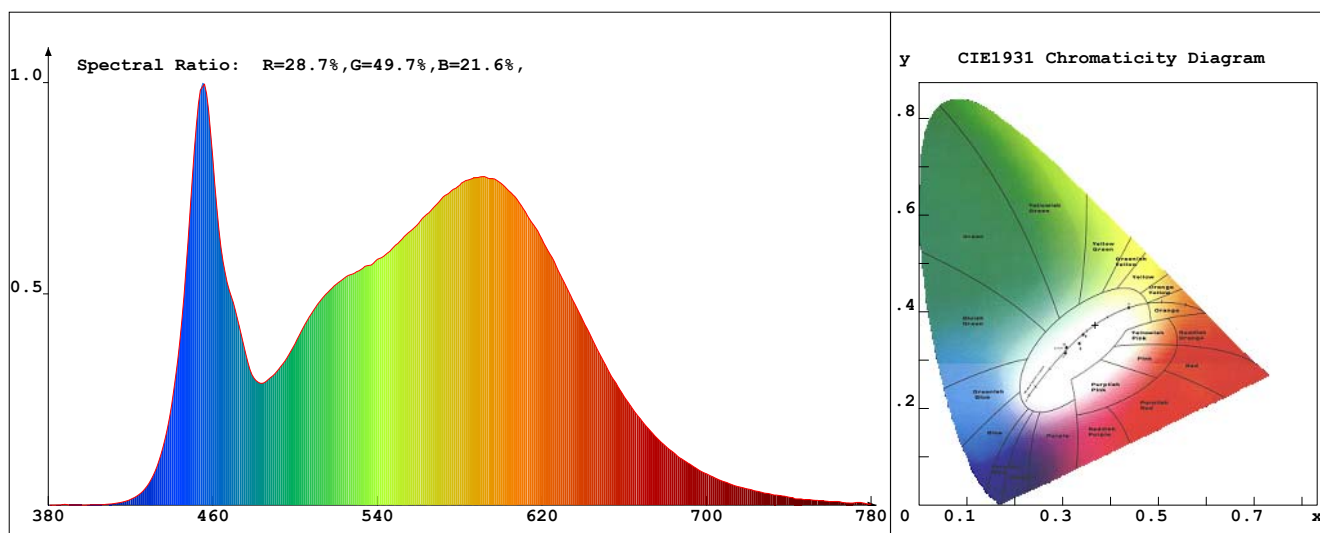
Temperature : 'C

Humidity : %

Operator :

Test Date : 2019-10-19

Remark: Bin: N42 Lotto: 374



Chroma Parameters

Chro.Coord.: x=0.3676 y=0.3722 u=0.2184 v=0.3318 duv=0.0018

CCT: 4339K Dominant Wave.: 576.5nm Purity: 22.0% Centre Wave: 456.3nm

Flux RGB Ratio: R=16.2%, G=80.7%, B=3.0% Peak Wave: 454.8nm Half Width: 22.5nm

Rendering Index: Ra= 81.6 CRI= 77.8

R1 =80 R2 =90 R3 =95 R4 =78 R5 =80 R6 =86 R7 =84 R8 =60

R9 =-3 R10=77 R11=77 R12=58 R13=83 R14=98 R15=73

PPF: 36.476 μ mol/s (400-700nm) PRF: 7.9mW (400-700nm) PAR: 6.8mW (400-700nm)

Photo Parameters

Flux: 2785.33lm Effi.: 128.9lm/W Radiant: 7986.0mW Iv: 0.0mcd

Scotopic Flux: 5043.5Plm Effi.: 0.0Plm/W S/P: 1.8

Efficiency: 0.00 Effi Level: A++ (EU 874-2012) Photon Flux: 37174.602 μ mol/s (380-780nm)

Ele. Parameters

Forward Current: If=907.0mA

Reverse Voltage: Vr=5.00V

Forward Voltage: Vf=23.82V

Reverse Current: Ir=0.00uA

Power: P=21.620W

Instrument state

Instrument: -

Integral Time: 45.260ms

VPeak: 13768

VDark: 1074

Scan Range: 380-780nm

Product ID: 201508924

IES TM-30-2015 Test Report

Product Mark

Product Type : F52-400-120822 21.6W

Temperature : 'C

Operator :

Remark: Bin: N42 Lotto: 374

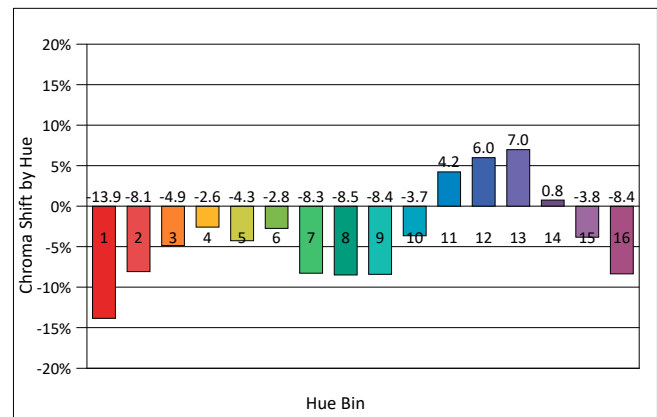
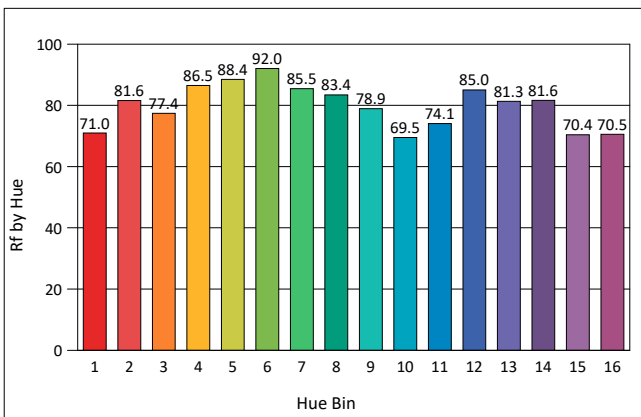
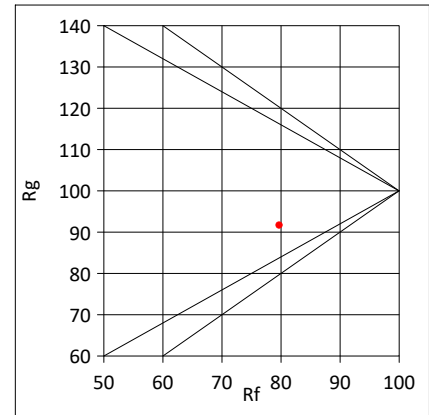
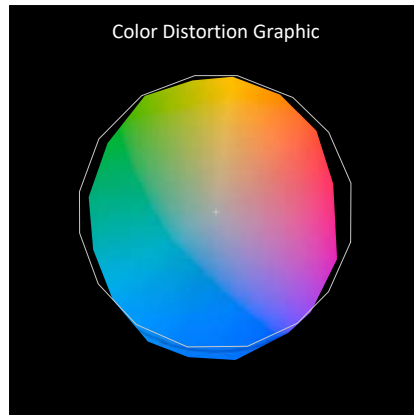
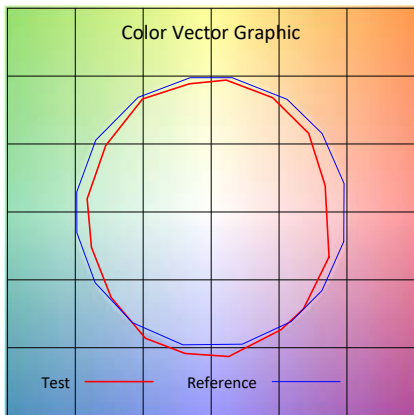
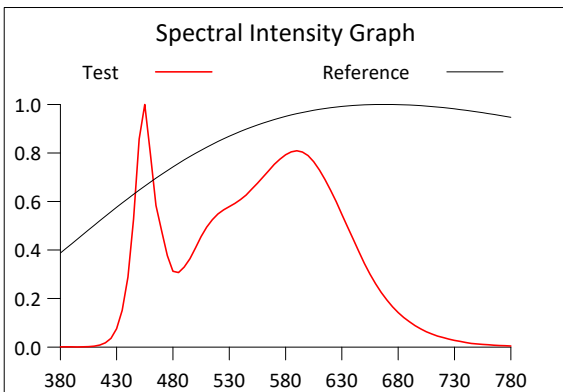
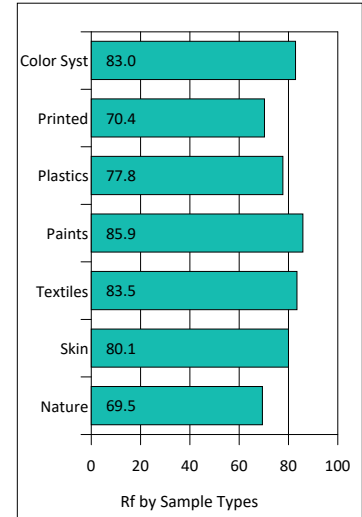
Manufacturer :

Humidity : %

Test Date : 2019-10-19

Rf: 79.7 CCT(K): 4339 u': 0.2184
 Rg: 91.7 LER: 335.4 Duv: 0.0018 v': 0.3318

Hue Bin	Rf	Graphic Shifts (%)	
		Chroma	Hue
1	71.0	-13.9%	1.1%
2	81.6	-8.1%	5.6%
3	77.4	-4.9%	9.4%
4	86.5	-2.6%	3.9%
5	88.4	-4.3%	1.5%
6	92.0	-2.8%	-2.1%
7	85.5	-8.3%	-0.7%
8	83.4	-8.5%	3.4%
9	78.9	-8.4%	12.7%
10	69.5	-3.7%	15.6%
11	74.1	4.2%	14.1%
12	85.0	6.0%	2.8%
13	81.3	7.0%	-11.4%
14	81.6	0.8%	-9.4%
15	70.4	-3.8%	-18.9%
16	70.5	-8.4%	-13.3%



IES TM-30-2015 Test Report

Product Mark

Product Type : F52-400-120822 21.6W

Manufacturer :

Temperature : 'C

Humidity : %

Operator :

Test Date : 2019-10-19

Remark: Bin: N42 Lotto: 374

