

LED Test Report

Product Mark

Product Type : F52-300-3200S2-W5 LOTTO 501 Manufacturer :

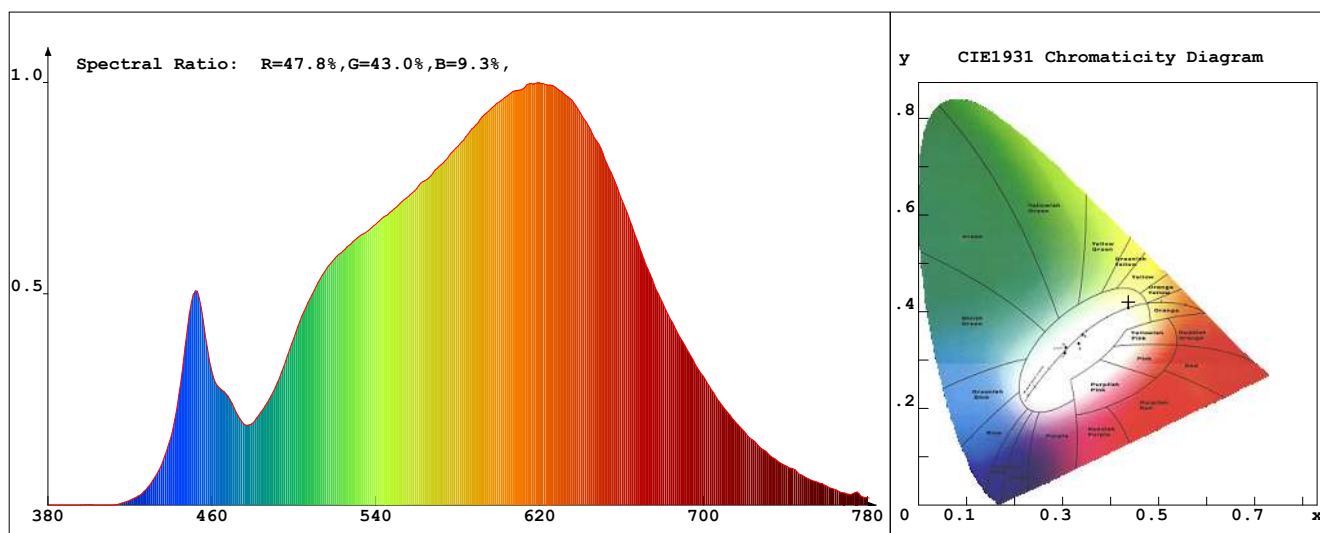
Temperature : 'C

Humidity : %

Operator :

Test Date : 31-01-23 01:40:44

Remark:



Chroma Parameters

Chro.Coor.: $x=0.4372$ $y=0.4202$ $u=0.2440$ $v=0.3517$ $duv=0.0063$

CCT: 3123K Dominant Wave.: 580.3nm Purity: 57.4% Centre Wave: 592.5nm

Flux RGB Ratio: R=22.0%, G=76.5%, B=1.5% Peak Wave: 619.5nm Half Width: 168.2nm

Rendering Index: Ra= 89.9 CRI= 86.3

R1 =89 R2 =92 R3 =95 R4 =91 R5 =88 R6 =90 R7 =94 R8 =80

R9 =49 R10=81 R11=92 R12=71 R13=89 R14=97 R15=84

PPF: 7.422 μ mol/s (400-700nm)

PRF: 1.5mW (400-700nm)

PAR: 1.3mW (400-700nm)

Photo Parameters

Flux: 505.79lm Effi.: 84.3lm/W Radiant: 1601.6mW Iv: 0.0mcd

Scotopic Flux: 708.9Plm Effi.: 0.0Plm/W S/P: 1.4

Efficiency: 0.00

Effi Level: A++ (EU 874-2012) Photon Flux: 7912.340 μ mol/s (380-780nm)

Ele. Parameters

Voltage: U=24.00V

Current: I=0.2500A

Power: P=6.020W

Power Factor: PF=1.000

Instrument state

Instrument: Lisun

Integral Time: 325.983ms

VPeak: 14632

VDark: 1378

Scan Range: 380-780nm

Product ID: 201508924

IES TM-30-2015 Test Report

Product Mark

Product Type : F52-300-3200S2-W5 LOTTO 501 Manufacturer :

Temperature : 'C

Humidity : %

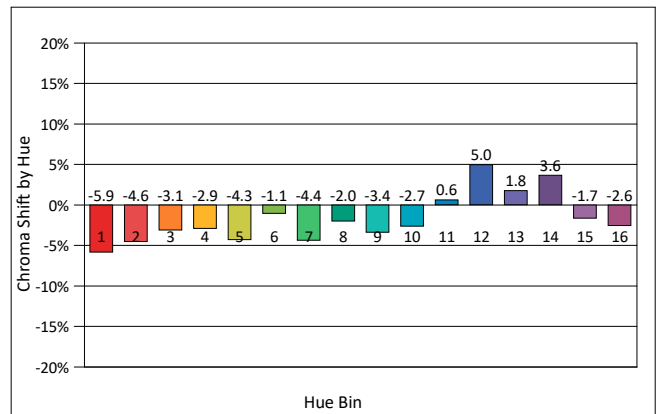
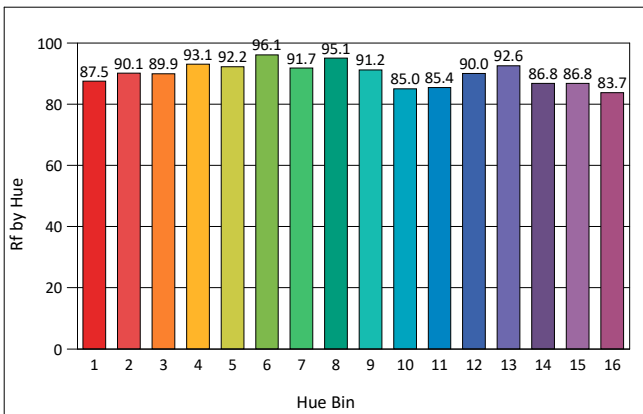
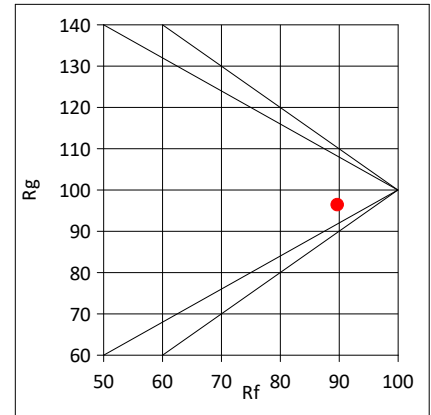
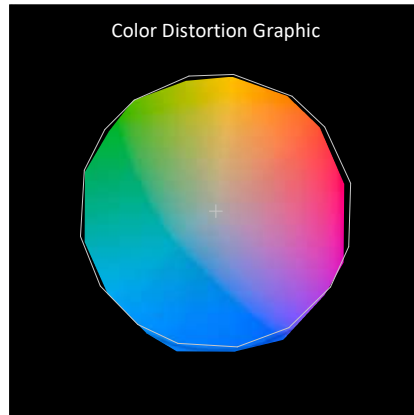
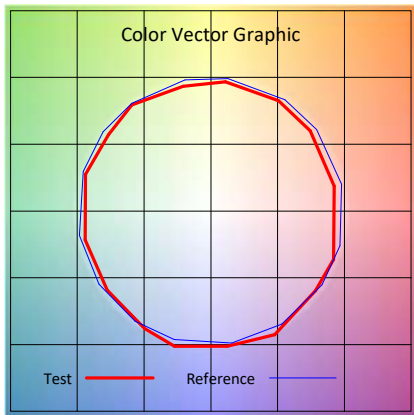
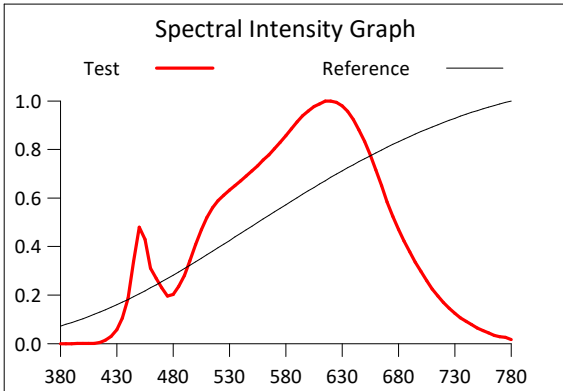
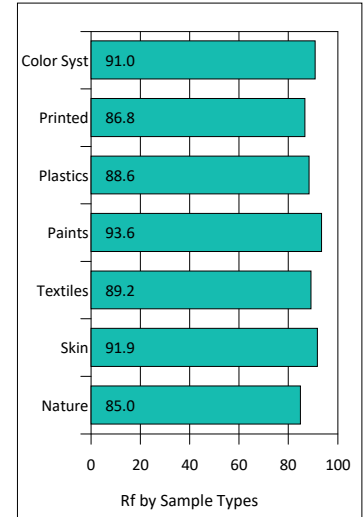
Operator :

Test Date : 31-01-23 01:40:44

Remark :

Rf: 89.7 CCT(K): 3123 u': 0.2440
 Rg: 96.4 LER: 307.3 Duv: 0.0063 v': 0.3517

Hue Bin	Rf	Graphic Shifts (%)	
		Chroma	Hue
1	87.5	-5.9%	-0.4%
2	90.1	-4.6%	1.7%
3	89.9	-3.1%	3.4%
4	93.1	-2.9%	1.5%
5	92.2	-4.3%	2.2%
6	96.1	-1.1%	0.7%
7	91.7	-4.4%	-0.4%
8	95.1	-2.0%	1.8%
9	91.2	-3.4%	4.1%
10	85.0	-2.7%	7.4%
11	85.4	0.6%	9.0%
12	90.0	5.0%	1.3%
13	92.6	1.8%	-4.0%
14	86.8	3.6%	-8.7%
15	86.8	-1.7%	-6.6%
16	83.7	-2.6%	-11.1%



IES TM-30-2015 Test Report

Product Mark

Product Type : F52-300-3200S2-W5 LOTTO 501 Manufacturer :

Temperature : 'C

Humidity : %

Operator :

Test Date : 31-01-23 01:40:44

Remark :

