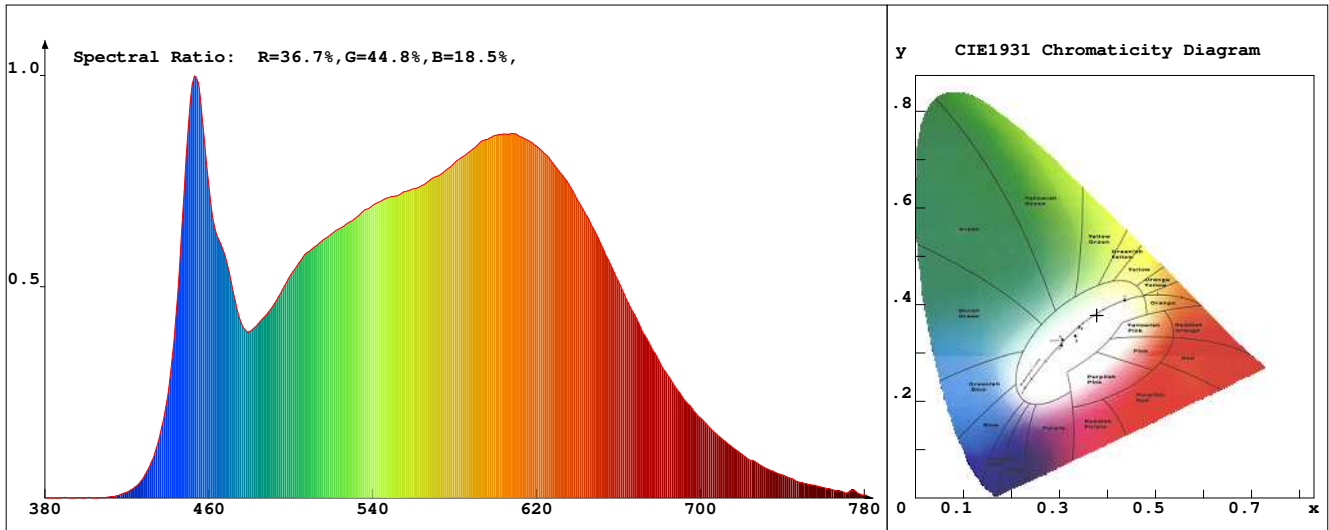


LED Test Report

Product Mark

Product Type : OR40S-F52-1408F2T-Ca9 24v Manufacturer : -
 Temperature : 'C Humidity : -%
 Operator : - Test Date : 2026-06-22
 Remark :



Chroma Parameters

Chro.Coord.:x=0.3780 y=0.3775 u=0.2232 v=0.3344 duv=0.0011
 CCT: 4074K Dominant Wave.:578.2nm Purity:26.7% Centre Wave:457.4nm
 Flux RGB Ratio:R=18.6%,G=78.3%,B=3.1% Peak Wave:452.8nm Half Width:26.7nm

Rendering Index:Ra= 91.8 CRI= 88.9

R1 =92	R2 =97	R3 =98	R4 =90	R5 =91	R6 =94	R7 =91	R8 =80
R9 =53	R10=92	R11=91	R12=71	R13=94	R14=100	R15=88	
PPF:19.258umol/s (400-700nm)			PRF:4.1mW (400-700nm)			PAR:3.5mW (400-700nm)	

Photo Parameters

Flux:1423.49lm Effi.:134.5lm/W Radiant:4216.4mW Iv:0.0mcd
 Scotopic Flux:2609.1Plm Effi.:0.0Plm/W S/P:1.8
 Efficiency:0.00 Effi Level:A++ (EU 874-2012) Photon Flux:20045.500umol/s (380-780nm)

Ele. Parameters

Forward Current:If=441.0mA Reverse Voltage:Vr=5.00V
 Forward Voltage:Vf=24.00V Reverse Current:Ir=0.00uA
 Power:P=10.601W

Instrument state

Instrument:Lisun LMS-8000 Integral Time: 141.812ms VPeak: 15768
 VDark: 1391 Scan Range: 380-780nm Product ID: 201508924

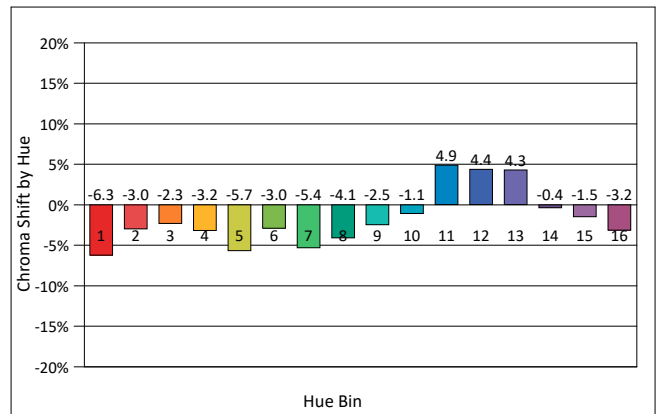
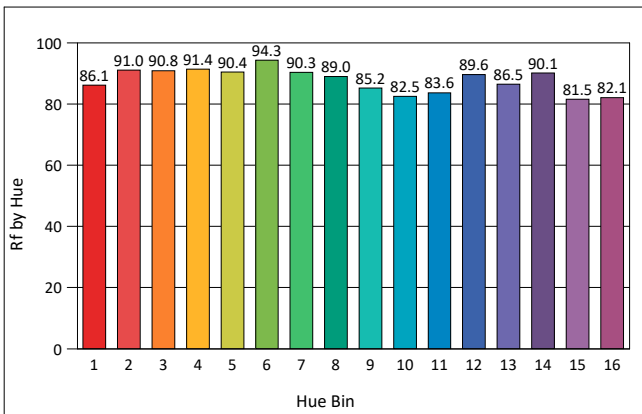
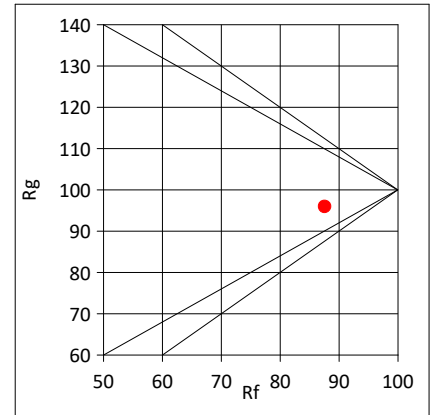
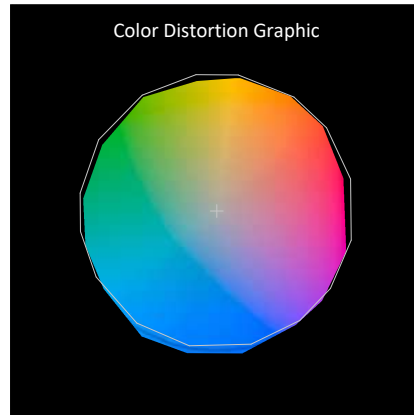
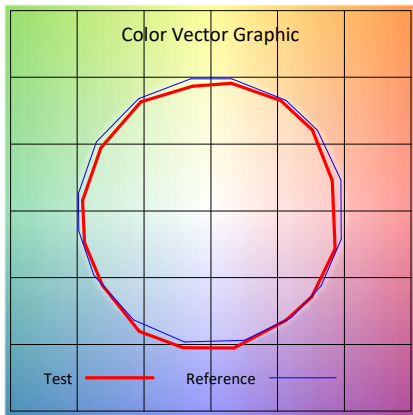
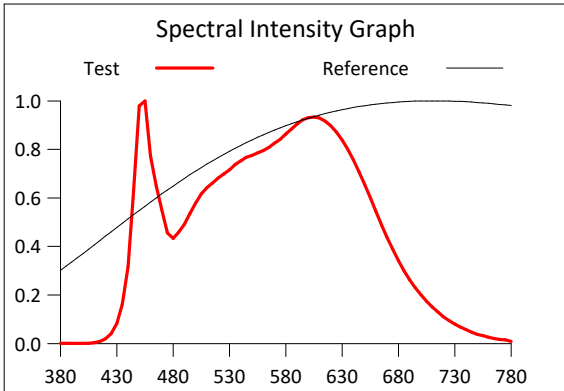
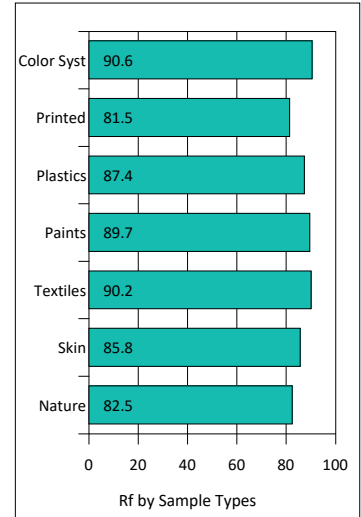
IES TM-30-2015 Test Report

Product Mark

Product Type : OR40S-F52-1408F2T-Ca9 24v Manufacturer : -
 Temperature : 'C Humidity : -%
 Operator : - Test Date : 2025-03-20
 Remark :

Rf: 87.6 CCT(K): 4074 u': 0.2232
 Rg: 95.9 LER: 306.8 Duv: 0.0011 v': 0.3344

Hue Bin	Rf	Graphic Shifts (%)	
		Chroma	Hue
1	86.1	-6.3%	0.8%
2	91.0	-3.0%	2.2%
3	90.8	-2.3%	3.1%
4	91.4	-3.2%	-0.5%
5	90.4	-5.7%	-0.4%
6	94.3	-3.0%	-0.1%
7	90.3	-5.4%	2.0%
8	89.0	-4.1%	4.6%
9	85.2	-2.5%	9.6%
10	82.5	-1.1%	9.9%
11	83.6	4.9%	8.5%
12	89.6	4.4%	0.0%
13	86.5	4.3%	-8.5%
14	90.1	-0.4%	-4.6%
15	81.5	-1.5%	-10.5%
16	82.1	-3.2%	-8.1%



IES TM-30-2015 Test Report

Product Mark

Product Type : OR40S-F52-1408F2T-Ca9 24v Manufacturer : -

Temperature : 'C Humidity : -%

Operator : - Test Date : 2025-03-20

Remark :

