

LED Test Report

Product Mark

Product Type : NE4X8LT-400-120821-5

Manufacturer :

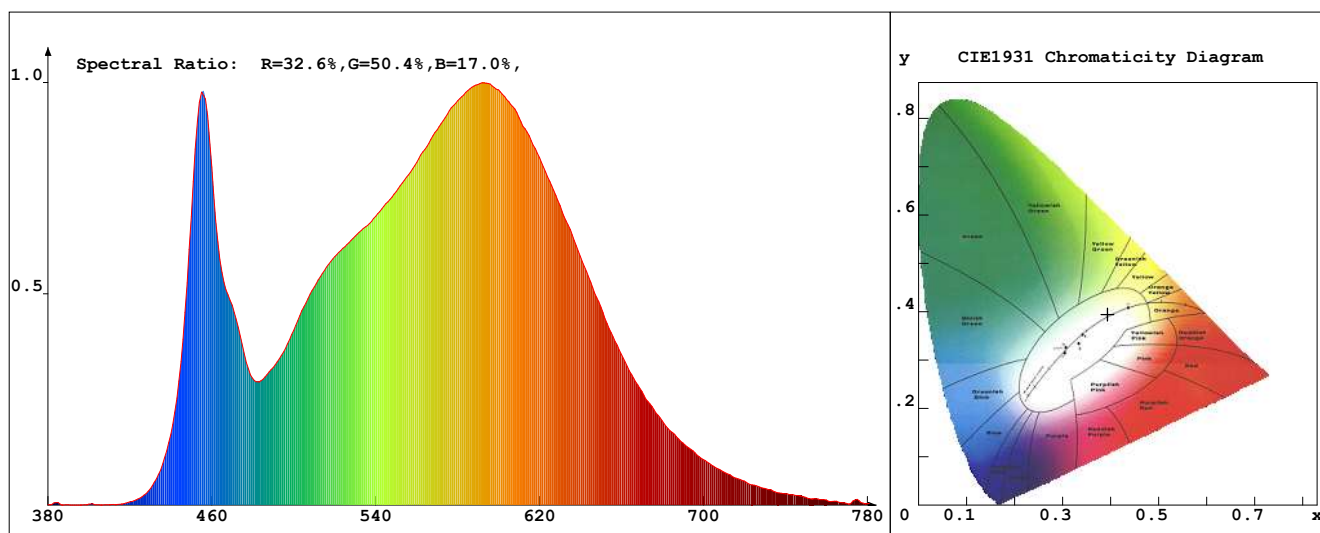
Temperature : 'C

Humidity : %

Operator :

Test Date : 31-01-23 00:48:36

Remark:



Chroma Parameters

Chro.Coor.: x=0.3939 y=0.3944 u=0.2269 v=0.3407 duv=0.0043

CCT: 3789K Dominant Wave.: 577.9nm Purity: 36.6% Centre Wave: 576.6nm

Flux RGB Ratio: R=17.5%, G=80.1%, B=2.4% Peak Wave: 591.8nm Half Width: 138.8nm

Rendering Index: Ra= 79.6 CRI= 76.0

R1 =77 R2 =89 R3 =96 R4 =76 R5 =77 R6 =85 R7 =83 R8 =56

R9 =-10 R10=74 R11=74 R12=56 R13=80 R14=98 R15=69

PPF: 3.342umol/s (400-700nm)

PRF: 0.7mW (400-700nm)

PAR: 0.6mW (400-700nm)

Photo Parameters

Flux: 265.56lm Effi.: 30.8lm/W Radiant: 722.8mW Iv: 0.0mcd

Scotopic Flux: 428.7Plm Effi.: 0.0Plm/W S/P: 1.6

Efficiency: 0.00

Effi Level: A++ (EU 874-2012) Photon Flux: 3418.760umol/s (380-780nm)

Ele. Parameters

Voltage: U=12.07V

Current: I=0.7140A

Power: P=8.620W

Power Factor: PF=1.000

Instrument state

Instrument: Lisun

Integral Time: 566.116ms

VPeak: 14344

VDark: 1468

Scan Range: 380-780nm

Product ID: 201508924

IES TM-30-2015 Test Report

Product Mark

Product Type : NE4X8LT-400-120821-5

Temperature : °C

Operator :

Remark :

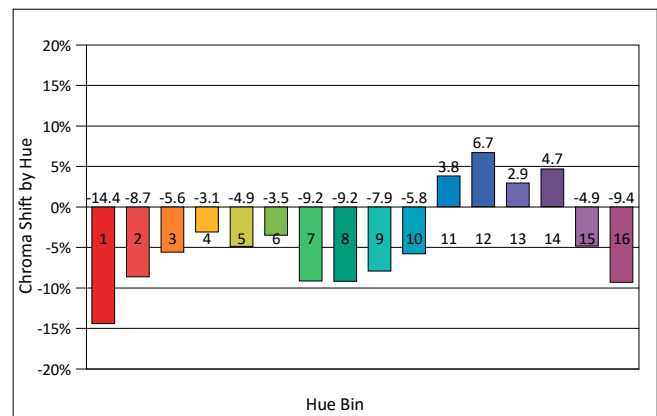
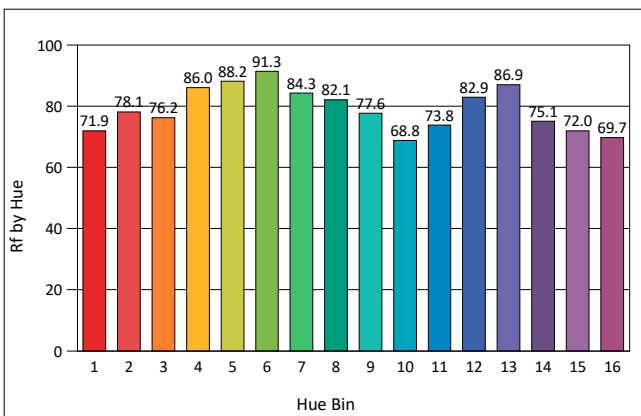
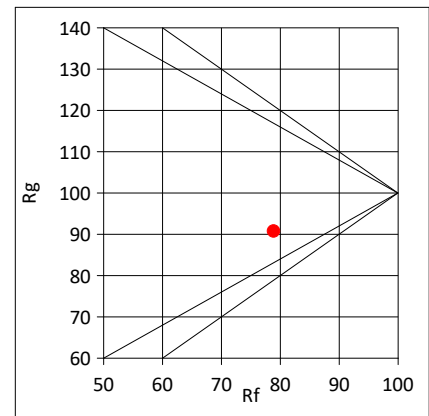
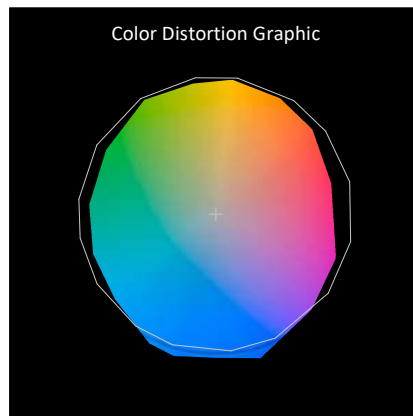
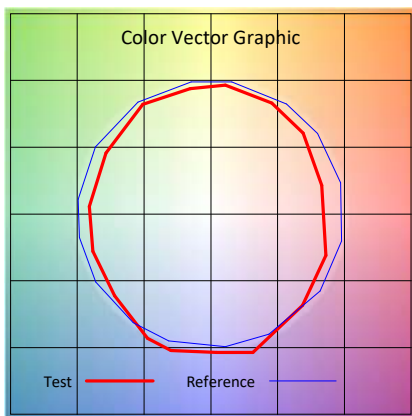
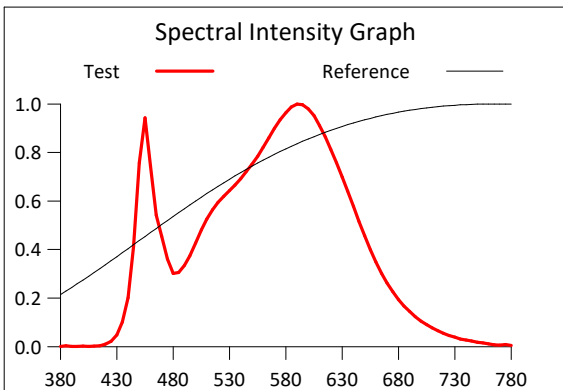
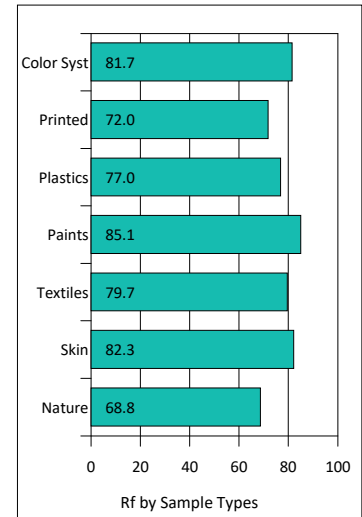
Manufacturer :

Humidity : %

Test Date : 31-01-23 00:48:36

Rf: 78.9 CCT(K): 3789 u': 0.2269
 Rg: 90.7 LER: 345.5 Duv: 0.0043 v': 0.3407

Hue Bin	Graphic Shifts (%)		
	Rf	Chroma	Hue
1	71.9	-14.4%	0.9%
2	78.1	-8.7%	6.3%
3	76.2	-5.6%	9.7%
4	86.0	-3.1%	4.2%
5	88.2	-4.9%	1.8%
6	91.3	-3.5%	-2.1%
7	84.3	-9.2%	-0.6%
8	82.1	-9.2%	3.6%
9	77.6	-7.9%	12.3%
10	68.8	-5.8%	16.4%
11	73.8	3.8%	15.6%
12	82.9	6.7%	3.1%
13	86.9	2.9%	-7.2%
14	75.1	4.7%	-17.4%
15	72.0	-4.9%	-16.3%
16	69.7	-9.4%	-12.8%



IES TM-30-2015 Test Report

Product Mark

Product Type : NE4X8LT-400-120821-5

Manufacturer :

Temperature : 'C

Humidity : %

Operator :

Test Date : 31-01-23 00:48:36

Remark :

