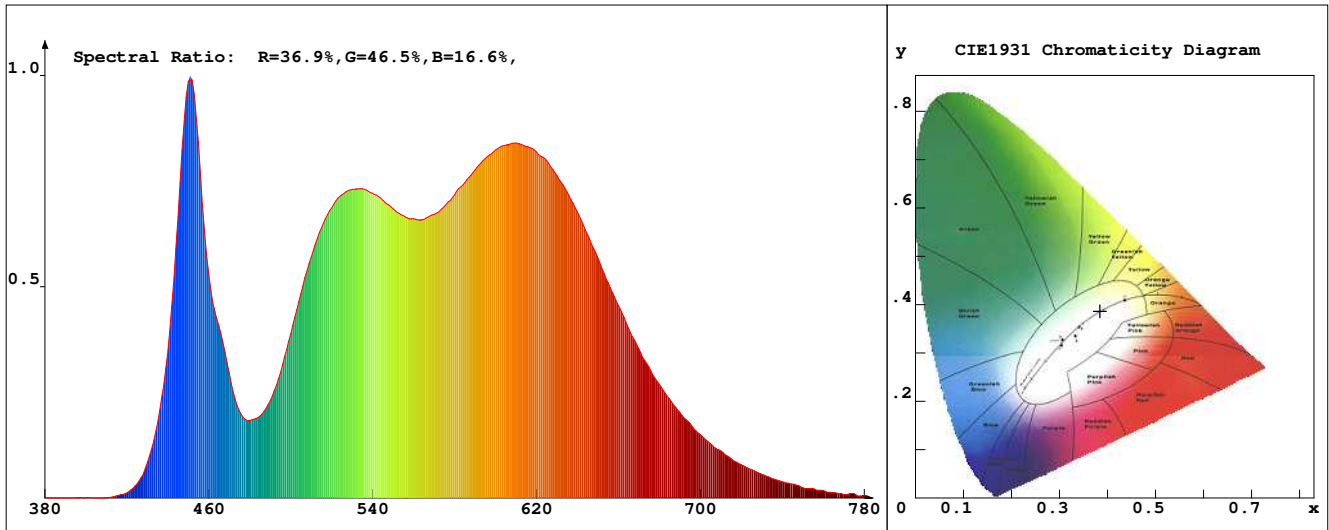


LED Test Report

Product Mark

Product Type : OR400-F52-4000M1-W5
 Temperature : 'C
 Operator : -
 Remark :

Manufacturer : -
 Humidity : -%
 Test Date : 2025-03-20



Chroma Parameters

Chro.Coor.:x=0.3841 y=0.3861 u=0.2238 v=0.3375 duv=0.0033
 CCT: 3972K Dominant Wave.:577.6nm Purity:31.2% Centre Wave:450.7nm
 Flux RGB Ratio:R=19.0%,G=79.0%,B=2.1% Peak Wave:449.6nm Half Width:17.7nm

Rendering Index:Ra= 90.2 CRI= 86.1

R1 =92	R2 =92	R3 =91	R4 =93	R5 =90	R6 =89	R7 =93	R8 =82
R9 =49	R10=79	R11=92	R12=65	R13=92	R14=94	R15=87	
PPF:11.778umol/s (400-700nm)			PRF:2.5mW (400-700nm)			PAR:2.2mW (400-700nm)	

Photo Parameters

Flux:847.22lm Effi.:105.11m/W Radiant:2558.7mW Iv:0.0mcd
 Scotopic Flux:1445.5Plm Effi.:0.0Plm/W S/P:1.7
 Efficiency:0.00 Effi Level:A++ (EU 874-2012) Photon Flux:12168.000umol/s (380-780nm)

Ele. Parameters

Forward Current:If=672.0mA Reverse Voltage:Vr=5.00V
 Forward Voltage:Vf=12.00V Reverse Current:Ir=0.00uA
 Power:P=8.070W

Instrument state

Instrument:Lisun LMS-8000 Integral Time: 198.524ms VPeak: 14744
 VDark: 1427 Scan Range: 380-780nm Product ID: 201508924

IES TM-30-2015 Test Report

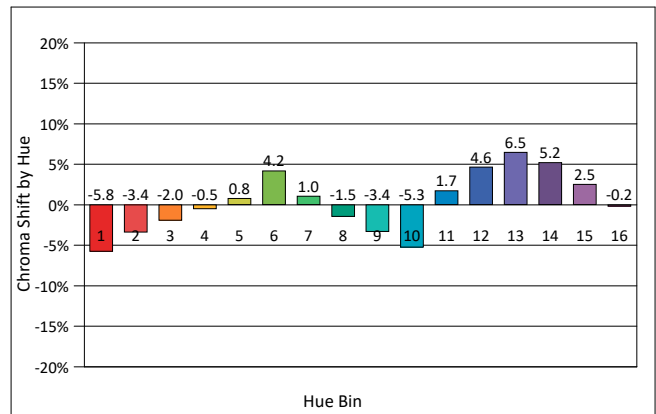
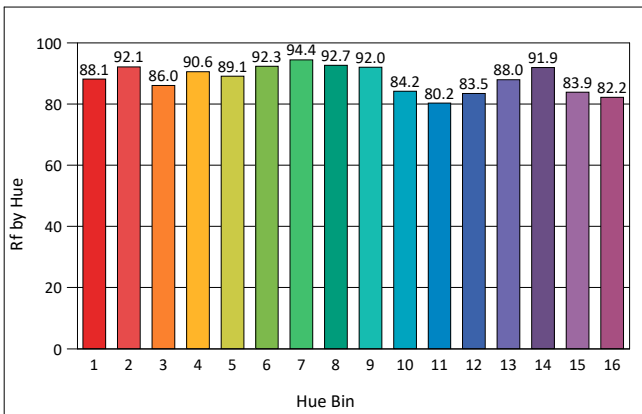
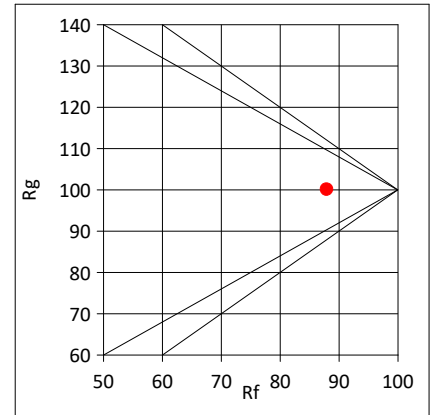
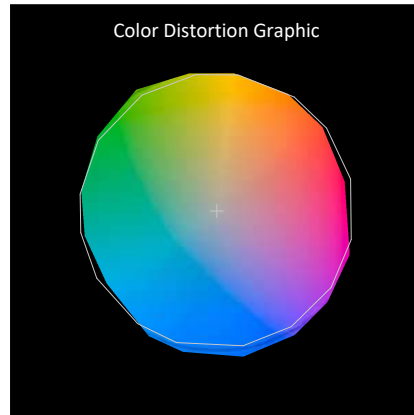
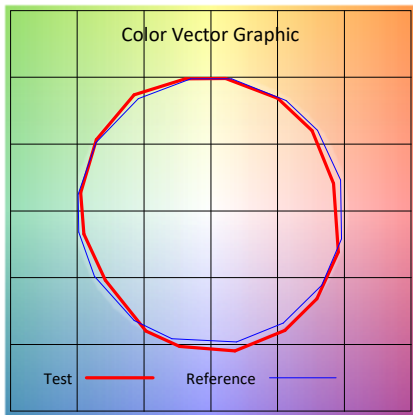
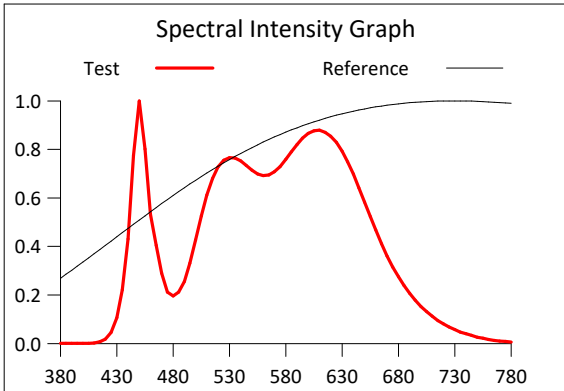
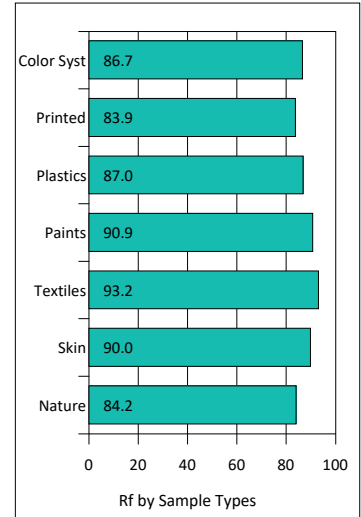
Product Mark

Product Type : OR400-F52-4000M1-W5
 Temperature : 'C
 Operator : -
 Remark :

Manufacturer : -
 Humidity : -%
 Test Date : 2025-03-20

Rf: 87.9 CCT(K): 3972 u': 0.2238
 Rg: 100.1 LER: 320.4 Duv: 0.0033 v': 0.3375

Hue Bin	Rf	Graphic Shifts (%)	
		Chroma	Hue
1	88.1	-5.8%	-1.6%
2	92.1	-3.4%	1.9%
3	86.0	-2.0%	6.1%
4	90.6	-0.5%	4.5%
5	89.1	0.8%	4.0%
6	92.3	4.2%	0.9%
7	94.4	1.0%	-2.0%
8	92.7	-1.5%	-1.5%
9	92.0	-3.4%	2.2%
10	84.2	-5.3%	6.9%
11	80.2	1.7%	11.8%
12	83.5	4.6%	6.7%
13	88.0	6.5%	-2.5%
14	91.9	5.2%	-2.0%
15	83.9	2.5%	-10.4%
16	82.2	-0.2%	-10.2%



IES TM-30-2015 Test Report

Product Mark

Product Type : OR400-F52-4000M1-W5

Manufacturer : -

Temperature : 'C

Humidity : -%

Operator : -

Test Date : 2025-03-20

Remark :

