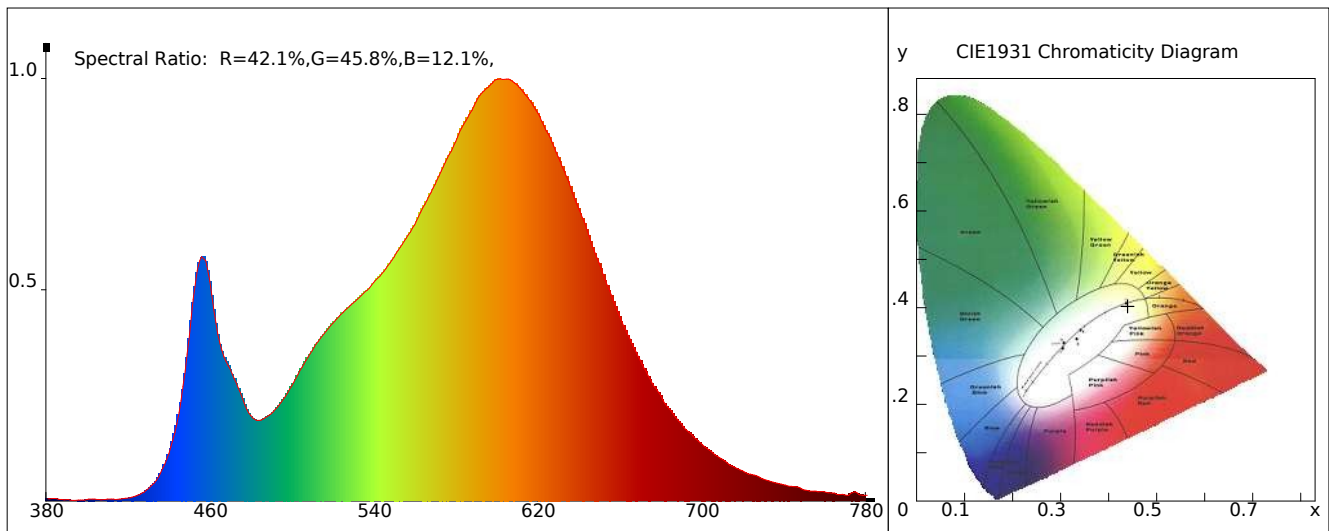


# LED Test Report

## Product Mark

Product Type : K52-30s-120DF2  
 Temperature : 'C  
 Operator :  
 Remark: BIN CT STEP3 LOTTO 441

Manufacturer :  
 Humidity : %  
 Test Date : 07-07-21 11:37:45



## Chroma Parameters

Chro.Coor.:x=0.4394 y=0.4030 u=0.2526 v=0.3475 duv=-0.0008  
 CCT: 2951K Dominant Wave.:583.3nm Purity:52.9% Centre Wave:595.1nm  
 Flux RGB Ratio:R=22.2%,G=76.0%,B=1.8% Peak Wave:599.7nm Half Width:117.1nm

## Rendering Index:Ra= 80.9 CRI= 78.2

R1 =79	R2 =91	R3 =95	R4 =77	R5 =80	R6 =90	R7 =80	R8 =55
R9 =0	R10=80	R11=76	R12=68	R13=82	R14=98	R15=72	
PPF:6.121umol/s(400-700nm)			PRF:1.3mW(400-700nm)			PAR:1.1mW(400-700nm)	

## Photo Parameters

Flux:900.50lm	Effi.:100.6lm/W	Radiant:1304.4mW	Iv:0.0mcd
Scotopic Flux:598.1Plm	Effi.:0.0Plm/W	S/P:1.3	
Efficiency:0.00	Effi Level:A++ (EU 874-2012) Photon Flux:6336.640umol/s(380-780nm)		

## Ele. Parameters

Forward Current:If=179.0mA	Reverse Voltage:Vr=5.00V
Forward Voltage:Vf=24.04V	Reverse Current:Ir=0.00uA
Power:P=4.321W	

## Instrument state

Instrument:Lisun  
 VDark: 1298

Integral Time: 354.491ms  
 Scan Range: 380-780nm

VPeak: 15768  
 Product ID: 201508924

# IES TM-30-2015 Test Report

## Product Mark

Product Type : K52-30s-120DF2

Temperature : 'C

Operator :

Remark: BIN CT STEP3 LOTTO 441

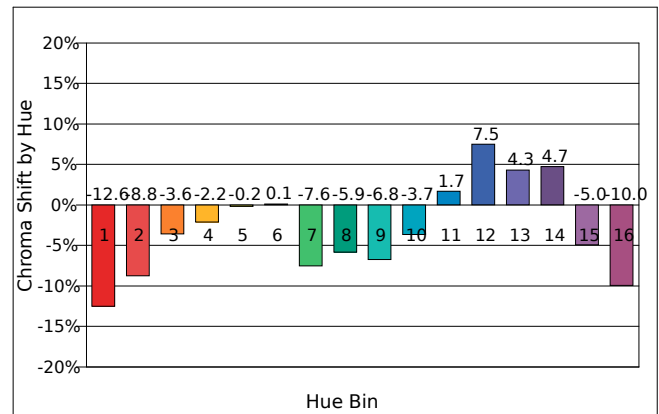
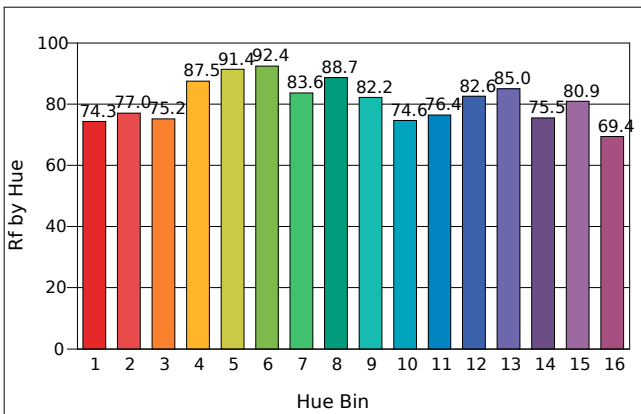
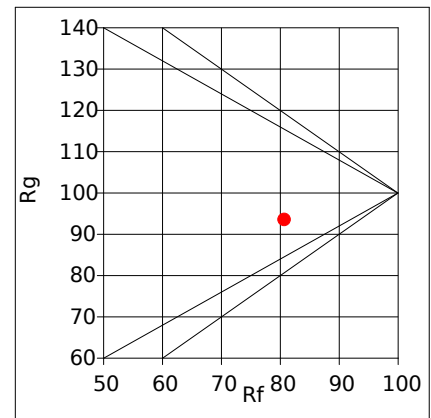
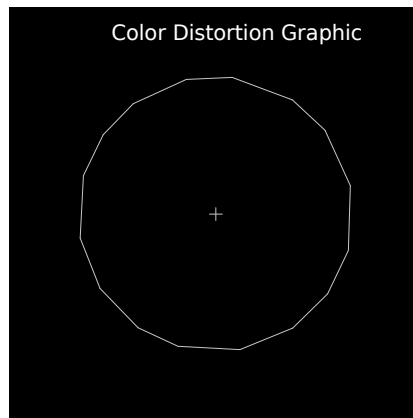
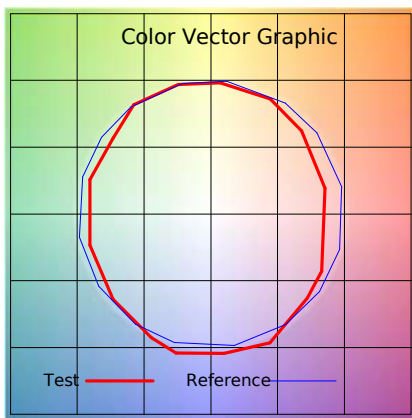
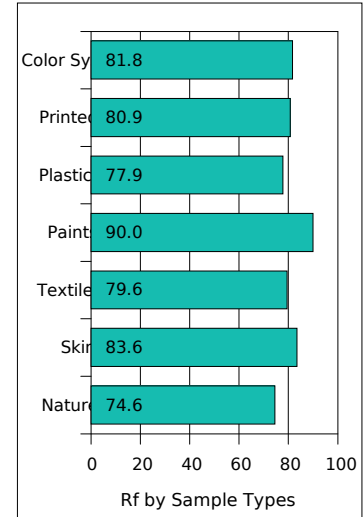
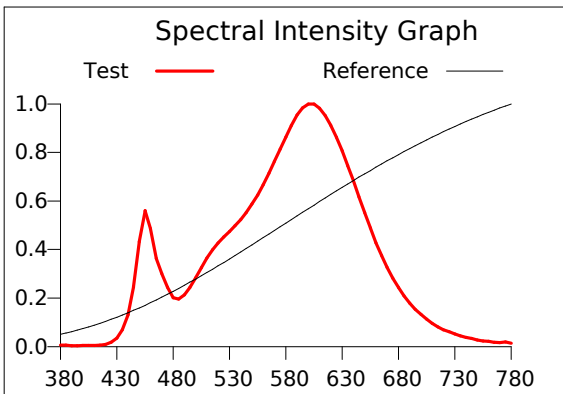
Manufacturer :

Humidity : %

Test Date : 07-07-21 11:37:45

Rf: 80.7 CCT(K): 2951 u': 0.2526  
 Rg: 93.5 LER: 333.7 Duv: -0.0008 v': 0.3475

Hue Bin	Rf	Graphic Shifts (%)	
		Chroma	Hue
1	74.3	-12.6%	1.2%
2	77.0	-8.8%	7.5%
3	75.2	-3.6%	11.1%
4	87.5	-2.2%	4.5%
5	91.4	-0.2%	3.0%
6	92.4	0.1%	-2.9%
7	83.6	-7.6%	-4.2%
8	88.7	-5.9%	0.9%
9	82.2	-6.8%	7.4%
10	74.6	-3.7%	14.2%
11	76.4	1.7%	15.6%
12	82.6	7.5%	2.7%
13	85.0	4.3%	-8.8%
14	75.5	4.7%	-17.3%
15	80.9	-5.0%	-9.0%
16	69.4	-10.0%	-18.5%



# IES TM-30-2015 Test Report

**Product Mark**

Product Type : K52-30s-120DF2

Temperature : 'C

Operator :

Remark: BIN CT STEP3 LOTTO 441

Manufacturer :

Humidity : %

Test Date : 07-07-21 11:37:45

