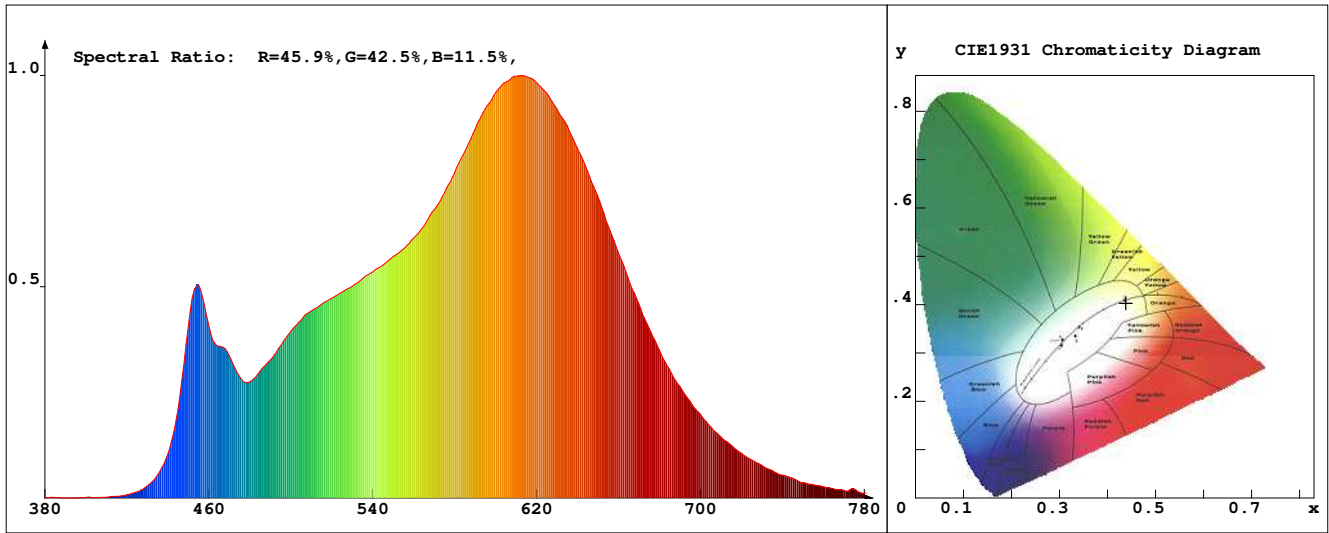


# LED Test Report

**Product Mark**

Product Type : OR30S-F52-1408F2T-Ca9 24v    Manufacturer : -  
 Temperature : 'C    Humidity : -%  
 Operator : -    Test Date : 2026-06-22  
 Remark :



**Chroma Parameters**

Chro.Coor.:x=0.4381 y=0.4029 u=0.2518 v=0.3474 duv=-0.0006  
 CCT: 2970K Dominant Wave.:583.2nm Purity:52.4% Centre Wave:597.3nm  
 Flux RGB Ratio:R=23.7%,G=74.2%,B=2.1% Peak Wave:612.6nm Half Width:135.9nm

**Rendering Index:Ra= 90.3 CRI= 88.9**

R1 =92	R2 =99	R3 =94	R4 =91	R5 =93	R6 =96	R7 =86	R8 =72
R9 =42	R10=98	R11=94	R12=84	R13=95	R14=97	R15=85	
PPF:18.827umol/s (400-700nm)			PRF:3.9mW (400-700nm)			PAR:3.4mW (400-700nm)	

**Photo Parameters**

Flux:1349.45lm    Effi.:128.7lm/W    Radiant:4022.2mW    Iv:0.0mcd  
 Scotopic Flux:1958.4Plm    Effi.:0.0Plm/W    S/P:1.5  
 Efficiency:0.00    Effi Level:A++ (EU 874-2012)    Photon Flux:19681.400umol/s (380-780nm)

**Ele. Parameters**

Forward Current:If=437.0mA    Reverse Voltage:Vr=5.00V  
 Forward Voltage:Vf=24.00V    Reverse Current:Ir=0.00uA  
 Power:P=10.511W

**Instrument state**

Instrument:Lisun LMS-8000    Integral Time: 144.376ms    VPeak: 14872  
 VDark: 1398    Scan Range: 380-780nm    Product ID: 201508924

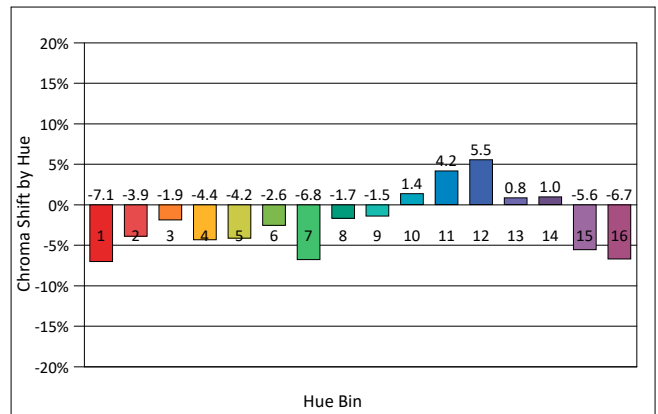
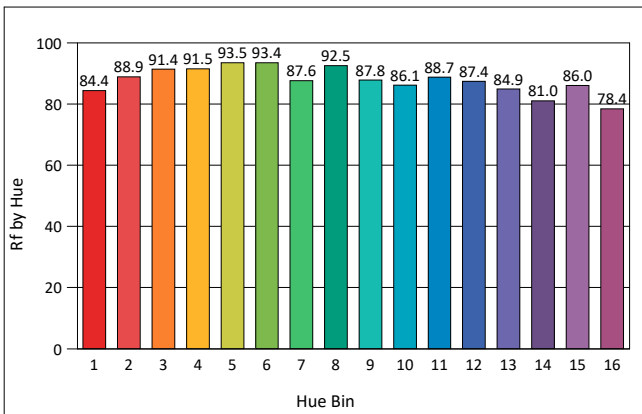
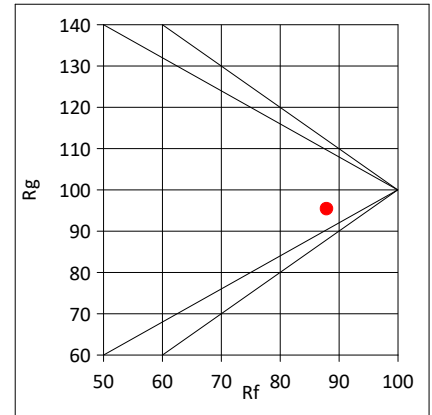
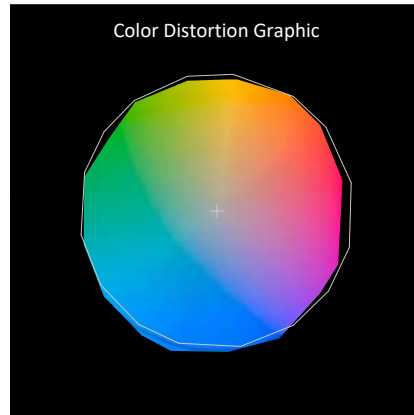
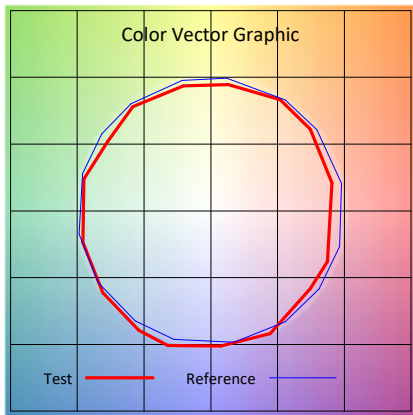
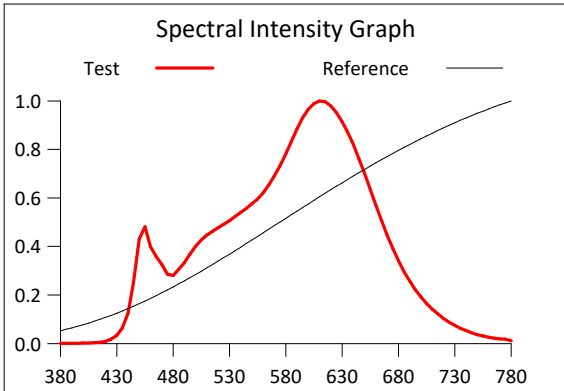
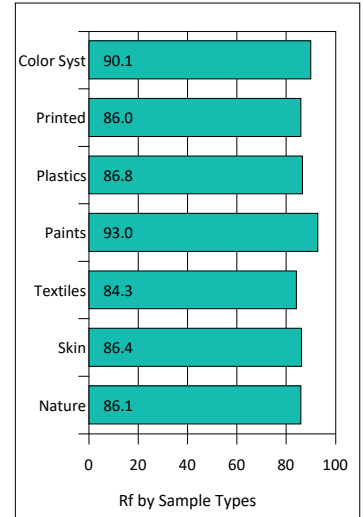
# IES TM-30-2015 Test Report

## Product Mark

Product Type : OR30S-F52-1408F2T-Ca9 24v    Manufacturer : -  
 Temperature : 'C    Humidity : -%  
 Operator : -    Test Date : 2025-03-20  
 Remark :

Rf: 87.9    CCT(K): 2970    u': 0.2518  
 Rg: 95.4    LER: 309.3    Duv: -0.0006    v': 0.3474

Hue Bin	Rf	Graphic Shifts (%)	
		Chroma	Hue
1	84.4	-7.1%	1.9%
2	88.9	-3.9%	3.2%
3	91.4	-1.9%	3.2%
4	91.5	-4.4%	-2.0%
5	93.5	-4.2%	0.0%
6	93.4	-2.6%	-0.0%
7	87.6	-6.8%	2.0%
8	92.5	-1.7%	3.9%
9	87.8	-1.5%	6.8%
10	86.1	1.4%	7.9%
11	88.7	4.2%	6.4%
12	87.4	5.5%	-3.7%
13	84.9	0.8%	-10.6%
14	81.0	1.0%	-14.2%
15	86.0	-5.6%	-3.8%
16	78.4	-6.7%	-12.9%



# IES TM-30-2015 Test Report

**Product Mark**

Product Type : OR30S-F52-1408F2T-Ca9 24v      Manufacturer : -

Temperature : 'C      Humidity : -%

Operator : -      Test Date : 2025-03-20

Remark :

