

LED Test Report

Product Mark

Product Type : F52-300-4800M2

Manufacturer : -

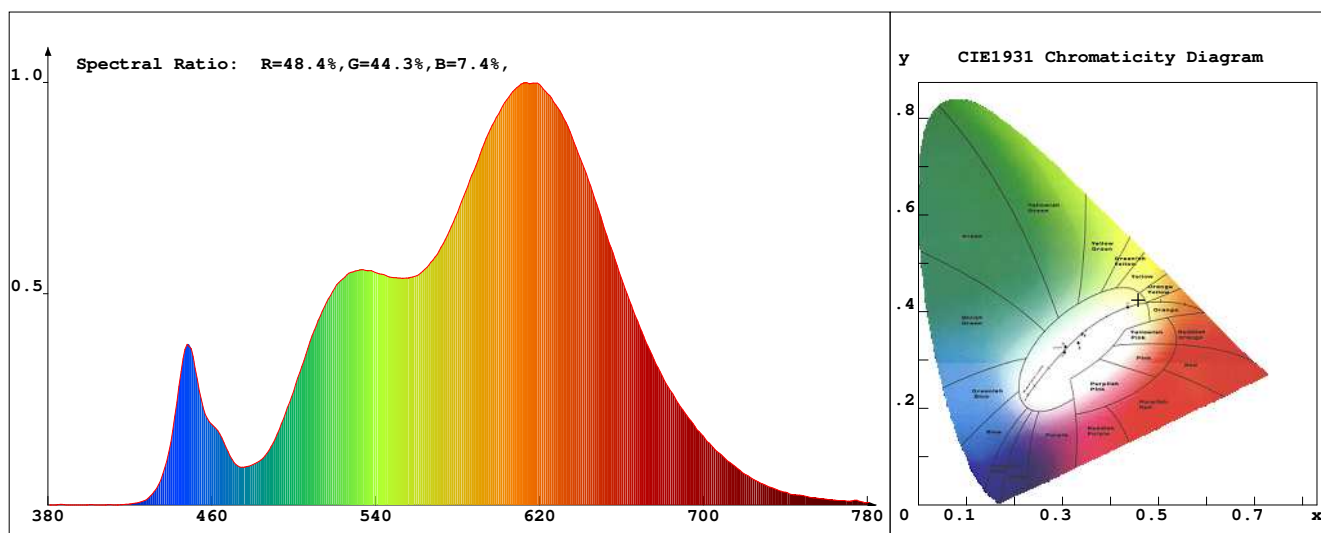
Temperature : 'C

Humidity : -%

Operator : -

Test Date : 2023-12-18

Remark:



Chroma Parameters

Chro.Coord.: $x=0.4575$ $y=0.4240$ $u=0.2551$ $v=0.3547$ $duv=0.0051$

CCT: 2837K Dominant Wave.: 582.0nm Purity: 64.6% Centre Wave: 589.6nm

Flux RGB Ratio: R=24.8%, G=74.2%, B=1.0% Peak Wave: 617.5nm Half Width: 143.4nm

Rendering Index: Ra= 92.4 CRI= 90.1

R1 =98 R2 =98 R3 =98 R4 =90 R5 =85 R6 =89 R7 =98 R8 =83

R9 =44 R10=94 R11=95 R12=77 R13=97 R14=99 R15=91

PPF: 13.242 μ mol/s (400-700nm)

PRF: 2.7mW (400-700nm)

PAR: 2.4mW (400-700nm)

Photo Parameters

Flux: 926.75lm Effi.: 95.0lm/W Radiant: 2777.5mW Iv: 0.0mcd

Scotopic Flux: 1172.8Plm Effi.: 0.0Plm/W S/P: 1.3

Efficiency: 0.00

Effi Level: A++ (EU 874-2012) Photon Flux: 13689.000 μ mol/s (380-780nm)

Ele. Parameters

Forward Current: If=406.0mA

Reverse Voltage: Vr=5.00V

Forward Voltage: Vf=24.02V

Reverse Current: Ir=0.00uA

Power: P=9.761W

Instrument state

Instrument: Lisun

Integral Time: 162.396ms

VPeak: 13176

VDark: 1096

Scan Range: 380-780nm

Product ID: 201508924

IES TM-30-2015 Test Report

Product Mark

Product Type : F52-300-4800M2

Temperature : 'C

Operator : -

Remark :

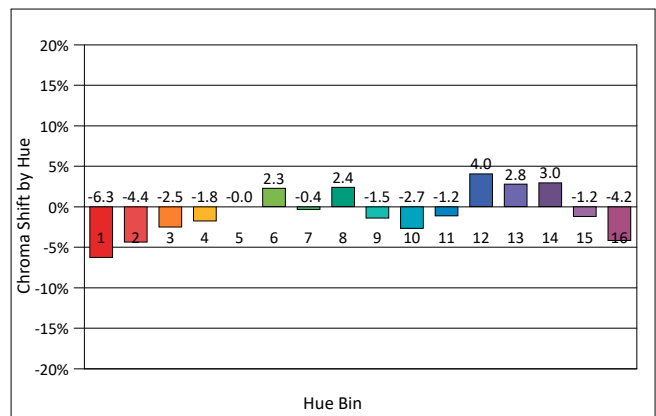
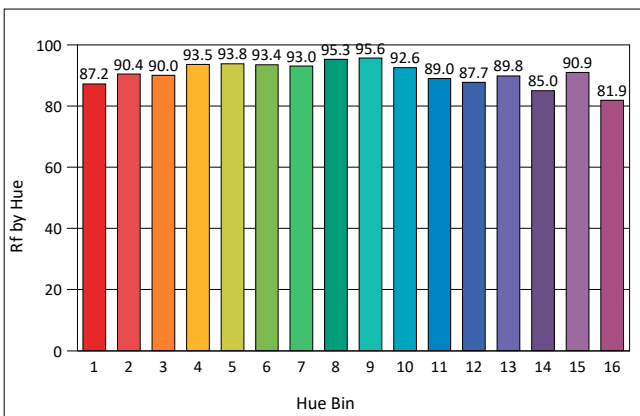
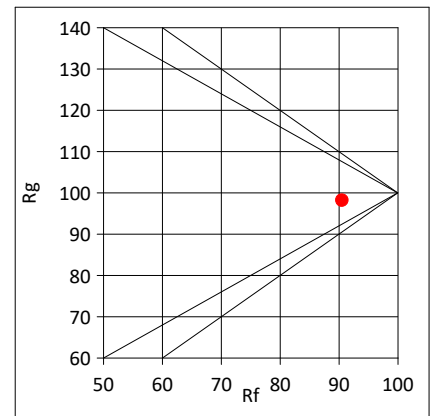
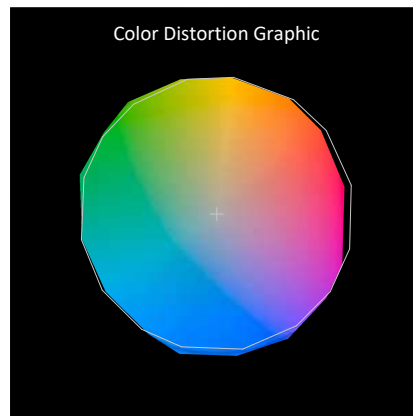
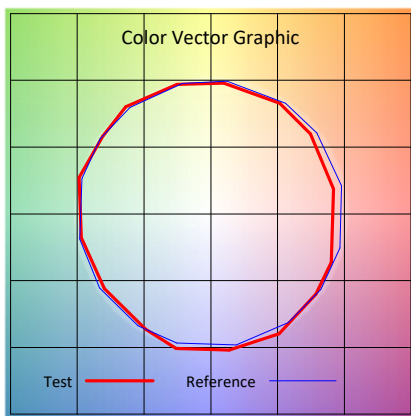
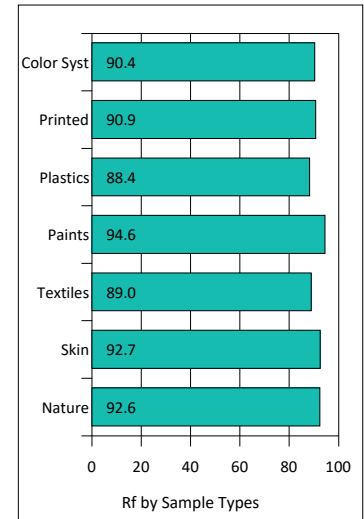
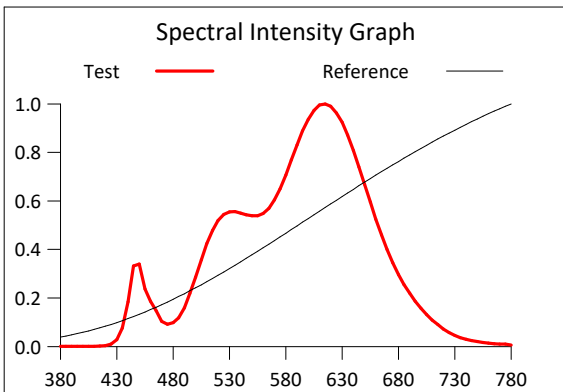
Manufacturer : -

Humidity : -%

Test Date : 2023-12-18

Rf: 90.5 CCT(K): 2837 u': 0.2551
 Rg: 98.2 LER: 326.5 Duv: 0.0051 v': 0.3547

Hue Bin	Rf	Graphic Shifts (%)	
		Chroma	Hue
1	87.2	-6.3%	-1.2%
2	90.4	-4.4%	2.0%
3	90.0	-2.5%	3.7%
4	93.5	-1.8%	2.1%
5	93.8	-0.0%	4.2%
6	93.4	2.3%	2.3%
7	93.0	-0.4%	-2.8%
8	95.3	2.4%	-0.3%
9	95.6	-1.5%	-0.5%
10	92.6	-2.7%	2.2%
11	89.0	-1.2%	6.4%
12	87.7	4.0%	0.2%
13	89.8	2.8%	-6.0%
14	85.0	3.0%	-10.5%
15	90.9	-1.2%	-4.7%
16	81.9	-4.2%	-11.8%



IES TM-30-2015 Test Report

Product Mark

Product Type : F52-300-4800M2

Manufacturer : -

Temperature : 'C

Humidity : -%

Operator : -

Test Date : 2023-12-18

Remark :

