

LED Test Report

Product Mark

Product Type : F52-300-3200M2

Manufacturer : -

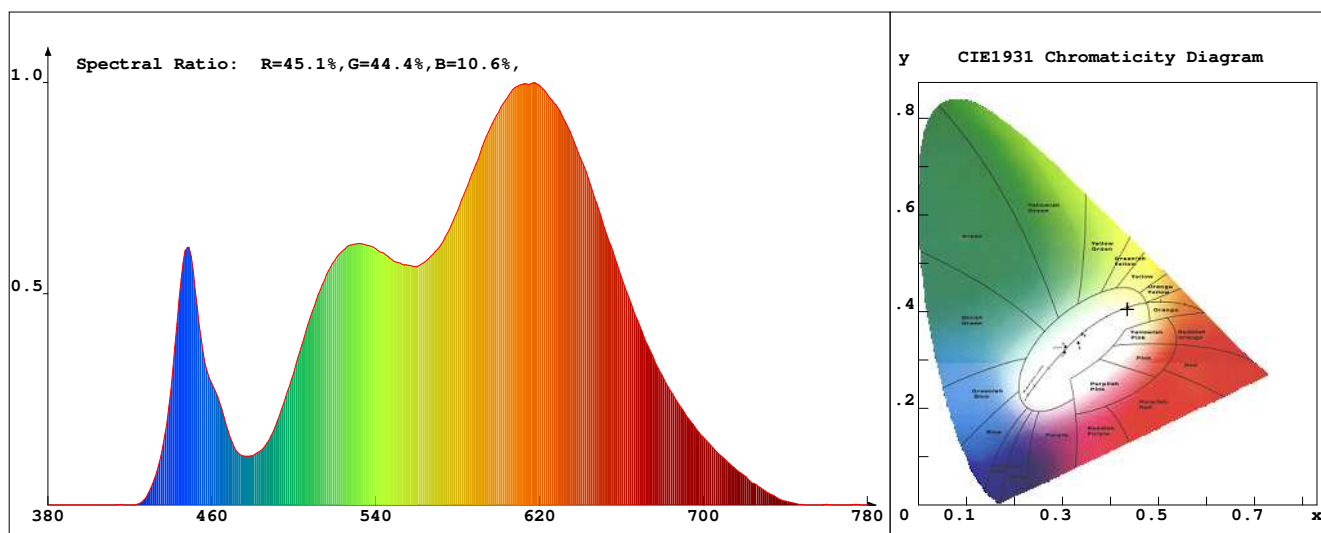
Temperature : 'C

Humidity : -%

Operator : -

Test Date : 2023-12-18

Remark :



Chroma Parameters

Chro.Coor.:x=0.4351 y=0.4052 u=0.2489 v=0.3477 duv=0.0007

CCT: 3041K Dominant Wave.:582.4nm Purity:52.2% Centre Wave:586.4nm

Flux RGB Ratio:R=23.8%,G=74.9%,B=1.3% Peak Wave:615.7nm Half Width:150.3nm

Rendering Index:Ra= 93.2 CRI= 90.0

R1 =96 R2 =96 R3 =95 R4 =94 R5 =94 R6 =97 R7 =93 R8 =81

R9 =50 R10=89 R11=91 R12=82 R13=96 R14=96 R15=88

PPF:11.285umol/s (400-700nm)

PRF:2.3mW (400-700nm)

PAR:2.1mW (400-700nm)

Photo Parameters

Flux:779.84lm Effi.:106.9lm/W Radiant:2374.4mW Iv:0.0mcd

Scotopic Flux:1096.2Plm Effi.:0.0Plm/W S/P:1.4

Efficiency:0.00

Effi Level:A++ (EU 874-2012) Photon Flux:11554.000umol/s (380-780nm)

Ele. Parameters

Forward Current:If=304.0mA

Reverse Voltage:Vr=5.00V

Forward Voltage:Vf=24.00V

Reverse Current:Ir=0.00uA

Power:P=7.301W

Instrument state

Instrument:Lisun

Integral Time: 187.945ms

VPeak: 12504

VDark: 1211

Scan Range: 380-780nm

Product ID: 201508924

IES TM-30-2015 Test Report

Product Mark

Product Type : F52-300-3200M2

Temperature : 'C

Operator : -

Remark :

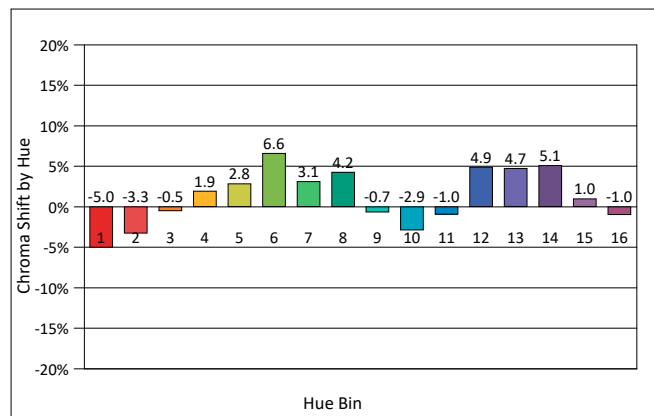
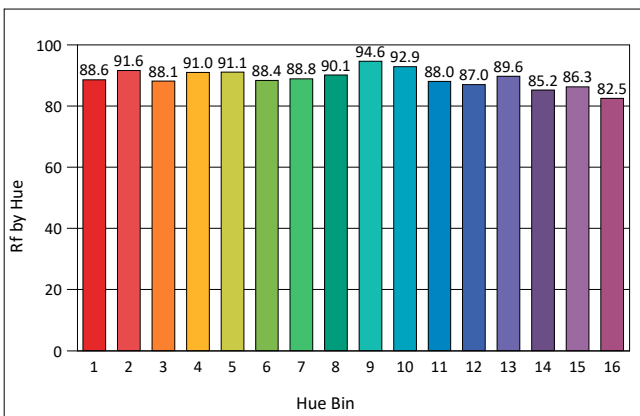
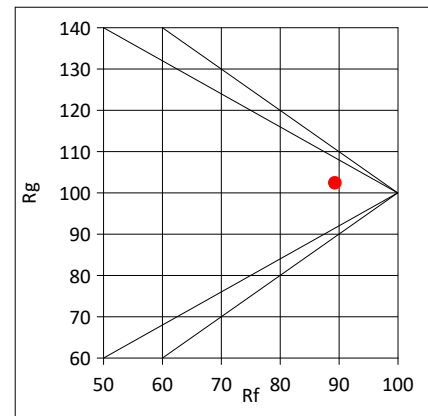
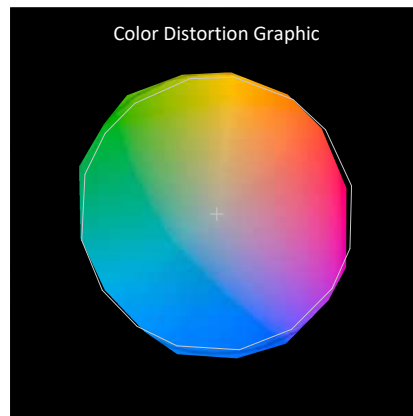
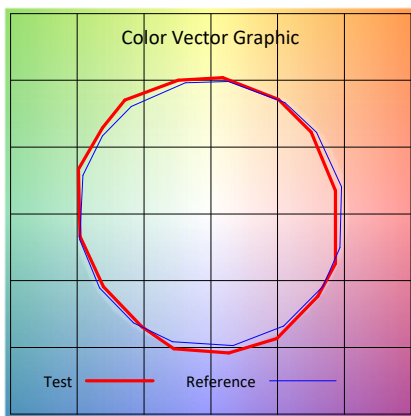
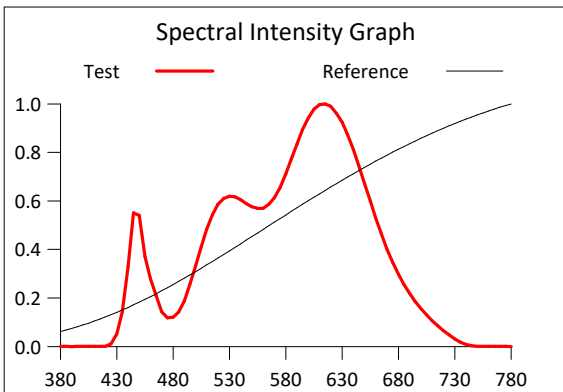
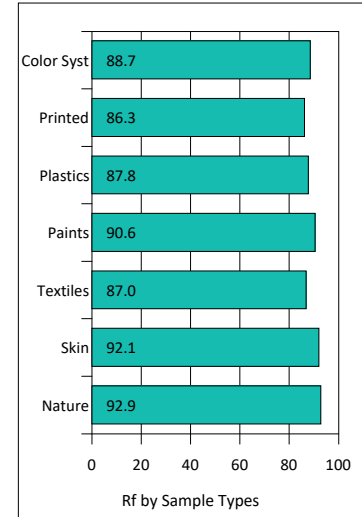
Manufacturer : -

Humidity : -%

Test Date : 2023-12-18

Rf: 89.3 CCT(K): 3041 u': 0.2489
 Rg: 102.4 LER: 322.2 Duv: 0.0007 v': 0.3477

| Hue Bin | Rf | Graphic Shifts (%) | |
|---------|------|--------------------|--------|
| | | Chroma | Hue |
| 1 | 88.6 | -5.0% | -1.9% |
| 2 | 91.6 | -3.3% | 2.6% |
| 3 | 88.1 | -0.5% | 5.4% |
| 4 | 91.0 | 1.9% | 4.4% |
| 5 | 91.1 | 2.8% | 4.6% |
| 6 | 88.4 | 6.6% | 1.4% |
| 7 | 88.8 | 3.1% | -5.0% |
| 8 | 90.1 | 4.2% | -3.8% |
| 9 | 94.6 | -0.7% | -2.3% |
| 10 | 92.9 | -2.9% | 0.8% |
| 11 | 88.0 | -1.0% | 6.6% |
| 12 | 87.0 | 4.9% | 2.0% |
| 13 | 89.6 | 4.7% | -4.1% |
| 14 | 85.2 | 5.1% | -9.4% |
| 15 | 86.3 | 1.0% | -8.1% |
| 16 | 82.5 | -1.0% | -12.3% |



IES TM-30-2015 Test Report

Product Mark

Product Type : F52-300-3200M2

Manufacturer : -

Temperature : 'C

Humidity : -%

Operator : -

Test Date : 2023-12-18

Remark :

